

We set the scene,
the choice is yours.

Imported Tire Treads!



Move out on cool rubber. The big one from Spain. Thick genuine tire-tread bottoms. Bold brass studs on the rich harness leather. Gold or charcoal. \$7.95

Every style on open display.

FLORSHEIM SHOE SHOP

109 ROSEDALE SHOPPING CENTER

9:30-9:30 Mon.- Fri.
9:30-6:00 Sat.
12:00-6:00 Sun.

636-1391



Diner's Club Card
Am. Express Card

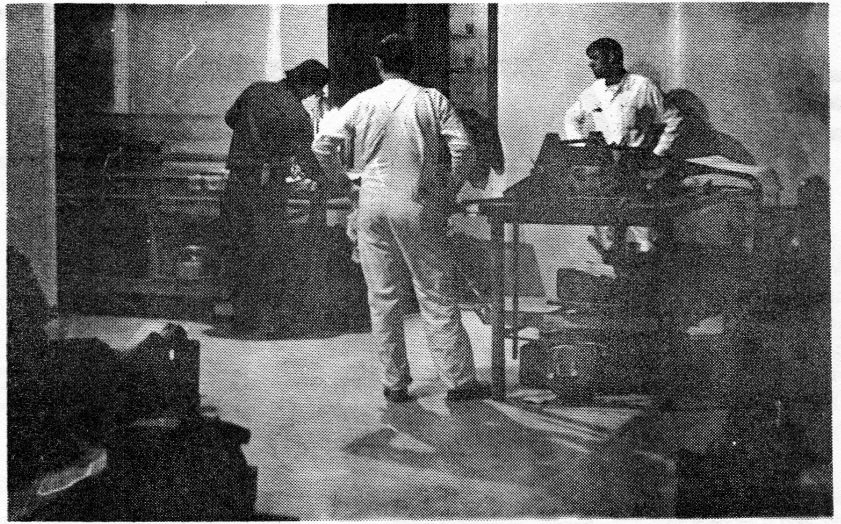


photo bob christiansen

Temporary students at work

Progress rolls on . . .

by Keith Crane

Aside from moved lockers, ripped out walls, and the smash of jackhammers what effects will the construction have on students?

The changes made now are small compared to the total changes to be made for next fall. Immediately after school lets out this June, the library walls will come crashing down.

Rooms 140 and 151 will be obliterated in order to make a new hall. The library window will be bricked up.

Richard St. Germain expresses the meaning of this expansion to teachers and students. "What it is that we are really after is flexibility," he says. The addition has been built with this concept in mind.

The arts and industrial arts additions express this concept. The art rooms were designed to fulfill a plan put into effect two years ago. They provide for four stations each designed for a specific use such as drawing or ceramics with a specialized instructor in each area.

The area where a student is working has all the materials and help he needs. However, the art addition as well as most of the buildings areas is as Tubbesing, art teacher, says, "a big mess right now."

The new resource center which will be 50% larger than the old library will extend into the hall between the A and C wings and beyond.

The new library will be based on the principle of giving students the opportunity to use resource materials to fullest advantage.

Study carrels will be placed where the tables are now, twelve of which will contain electricity so that tapes and films can be used in them. There will be five conference rooms

with soundproofing for seminar and group use. A typing room will also be added for student use. The new resource center will be carpeted for soundproofing.

Worked in with the new resource center is an entirely new type of room. Four new English or social studies rooms will be directly

on the library with doors opening into it, folding doors in between. Thus classes can be combined so that one teacher can lecture to two classes.

One of the greatest changes brought on by the building will be in the science department. On one side the new classrooms will be changed from the present labs to a combination of lecture room in the front (with arm chairs) and lab in the back. Folding walls will also be used here so that labs can be combined.

On the other side will be the biology rooms.

In the center of the science complex will lie a lab resource center, a materials resource center, and a teacher planning area. An individualized project area will allow students to make up experiments they miss and to work on and keep projects they develop. Students may

have team teachers, combination labs, or independent study. If students lack knowledge in some area they can use the resource center. A method whereby students have independent study kits which contain all the compounds necessary for the experiment being planned.

These additions with some changes in the main office, a folding wall in the cafeteria, and the small stage should be completed before school opens next fall.

Coming soon . . . our new home
at the "Corner of Thrift!"

**INTERESTED
IN
INTEREST?**

FIRST FEDERAL

Savings & Loan Association of St. Paul

Chartered and Supervised by the United States Government

HOME OFFICE
CORNER OF THRIFT—CEDAR AT FIFTH
OPEN DAILY 9 TO 4, MONDAYS 'TIL 7:30
PARK FREE AT OUR NEW 5th ST. LOT
—224-5821

First Federal pays you the
HIGHEST INTEREST RATES
authorized by law!

BONANZA

Sirloin Pit

Steak, Chicken,
Hamburger, Fish, Shrimp.

Open 7 Days A Week
11 a.m. to 9 p.m.

COME AS YOU ARE

TWO LOCATIONS State Fairgrounds and 1895 N. Rice