

Abilene, Ramsey exchange...

The following story is an interview with Linda Kampff who attended Abilene High School from Ramsey.

How is the school itself built compared to Ramsey?

It's a lot smaller than ours. The gymnasium isn't quite as big - almost though. But there's kind of like one wing of Ramsey is like their whole school. It's got like classes on top of each other on two levels - and that's kind of it. And then they've got certain halls that go out certain classrooms.

What is the relationship like between students and teachers?

Student-teacher relationships are more personal. There aren't so many kids for the teacher to remember and it seems like there's more time. It's a more relaxed atmosphere between the teachers and the students.

I think the relaxed atmosphere is beneficial, I don't know but it didn't seem like anyone was complaining about their teachers too much. And they all got on really well, most of them did.

Do you have any comments about the curriculum?

We have more variety, a lot more classes to choose from like in our science department you've got a choice of applied chemistry or general chemistry.

Down there it's just chemistry. And in the English department you've got just honors English for seniors and there's ways of getting out of that by taking journalism and speech.

Here we've got a choice of World Lit or English 12. And down there they have a vocational school and in there they have a highly developed mechanics department and they take apart cars and jeeps and tractors and all kinds of things. It was interesting.

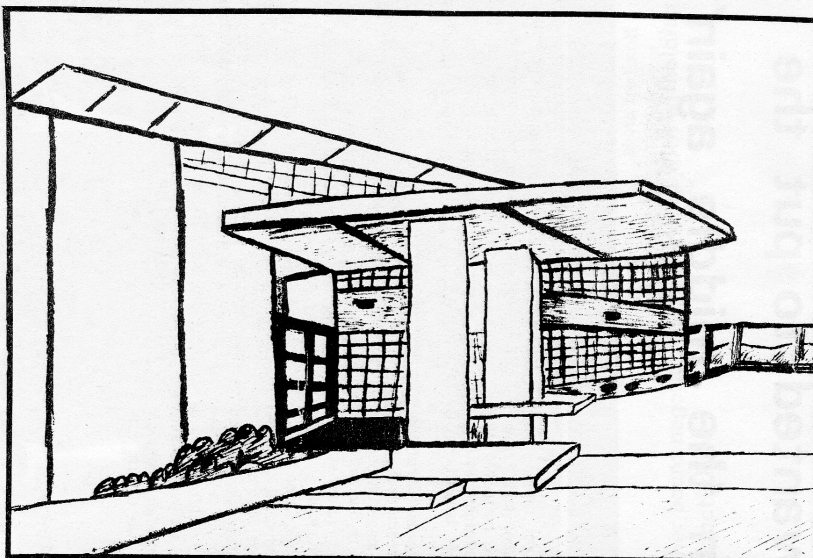
And they've got a carpentry class where there's five or six boys that build a cabin or a small house during the school year (the house is later sold).

What value was exchange, was there any?

I think we should do the exchange again, because it was a great experience for both Tim and I. We, ourselves, really got a lot out of it. We did do a lot of things for them down there. And maybe next year we could go to a school that is really different from ours, that we have time to look into, and that would really benefit us. But for beginning the exchange I think this was really something great to do because maybe next year we can iron out the problems that we had with it this year and be more organized.

Do you see the exchange as more beneficial to the other school?

This year yes, but in the future I think we can find more schools with a different educational system than Ramsey's and we'll see how they work.



An artist's conception of Abilene High School

Students and ideas

by Craig Eckert

Anne Morse and Paul Hettenback arrived here in the Twin Cities on April 4, for a two week stay as the second phase of the Roseville-Abilene exchange program.

Abilene is a town of about 8,000

so the contrast is a factor since Roseville alone is about 30,000.

Anne and Paul seem pretty much agreed that Ramsey is much bigger and more differing in curriculum than their high school, which has a population of about 600.

"The people here aren't really very much harder to meet than in Abilene, but there's so many more that it's hard to remember names," said Paul.

An apparent difference between Abilene and Ramsey seems to be the way the classes are conducted.

Paul commented that he felt the teachers here are not as strict in the classroom as the teachers in Abilene.

"In Abilene the teacher will like tell you to sit-up and listen," observed Paul.

He went on to say that he preferred the more strict attitude in Abilene because he felt he could learn more if the classroom was in that ridged atmosphere. Anne, however, didn't exactly agree with Paul in that aspect.

She apparently, at least temporarily, enjoys the more open atmosphere of the classes at Ramsey.

Paul is the president of the Abilene student council and Anne is the secretary. They both agree that their council doesn't have the powers that they would like.

Not unlike Ramsey's governmental body, they openly admit that they do not feel their student council has put through any major types of legislation in recent times.

The Abilene exchange program has been going on for the last nine years, in which time they have exchanged with schools in states including; Washington, New York, New Mexico, and Florida.

The two students from Abilene are sanctioned by their student council, but are financially sponsored by various civic groups in the Abilene area.

In exchange for the sponsorship, Paul and Anne will speak to these civic groups when they return home.

ATTITUDES POLLED Abilene, Ramsey— clash, agree

conducted by Tim Heil

Ramsey and Abilene have a number of remarkable similarities and odd differences. Surprisingly enough, 25% of Ramsey students believe we should have a dress code and only 10% of Abilenites do. This may be because Abilene has a very strict dress code.

Abilene came out more liberal on issues of social life. More students dated, marriage was proposed at an earlier age, and more students had a job at Abilene.

Smoking, drinking, and drugs were radically different between the two schools. Fifty percent more Ramsey students smoke than at Abilene and twice as many Abilenites drink as Ramsey students.

Do you have a job?
Abilene 70% do Ramsey 50% do

Do you plan on college after high school?
Abilene 60% yes Ramsey 95% yes

Do you believe your school is adequately preparing you for college?
Abilene 45% yes Ramsey 45% yes

Do you drive to school?
Abilene 60% yes Ramsey 15% yes

Do you believe athletics is an asset to high school?
Abilene 85% yes Ramsey 80% yes

Do you support sports in your school?
Abilene 60% yes Ramsey 60% yes

Do you feel your student council is effective?
Abilene 25% yes Ramsey 5% yes

Can you communicate with your
Abilene 80% can Ramsey 95% can

Do you believe in premarital sex?
Abilene 50% yes Ramsey 50% yes

Do you like long hair on boys?
Abilene 75% yes Ramsey 50% yes

Should marijuana be legalized?
Abilene 30% yes Ramsey 30% yes

Have you ever used a drug?
Abilene 20% yes Ramsey 25% yes

Do you smoke?
Abilene 50% do Ramsey 75% do

Do your parents?
Abilene 75% do Ramsey 50% do

Do you drink alcoholic beverages?
Abilene 80% do Ramsey 40% do

Do you date?
Abilene 90% do Ramsey 85% do

WANTED

TO INTRODUCE A NEW NAME
AND
TO RENEW A FAMILIAR FACE



Scherling-Pletch
IS NEW TO
RAMSEY HIGH BUT...
MILES HENDERSON
IS NOT

For many years Miles has been a familiar face photographing seniors and activities at Ramsey. He is back now offering his best to you with Scherling Pletch Studios. New also next year is living color - the very latest in senior portraits.

**SCHERLING-PLETCH
STUDIOS**
LEXINGTON PLAZA
488-6624



YOUR OFFICIAL YEARBOOK PHOTOGRAPHER